



Local & Regional  
Europe

CEMR

# For a Europe of municipalities, cities and regions



**CEMR**

**60** national associations

**150 000** local and regional  
governments

**60** years of experience

**41** countries



“ Europe is a common home continually under construction. It must be built upon solid foundations with local and regional governments, partners of the European institutions, attentive to the needs and concerns of the citizens. Together, let's set up a new model of governance based on a true partnership. ”

**Annemarie Jorritsma**  
CEMR President  
Mayor of Almere, VNG President

## The Council of European Municipalities and Regions

CEMR brings together more than 150 000 municipalities, cities and regions federated through 60 national associations from 41 European countries. It therefore constitutes the most representative association of local and regional governments in Europe.

CEMR promotes the construction of a united, peaceful and democratic Europe founded upon local self-government and respect for the principle of subsidiarity.

## Our member associations

CEMR's members are national associations of local and regional governments, whose own members are municipalities, cities and regions in their country.

CEMR is made up of associations from 41 of the 47 Council of Europe member countries, including all 28 member states of the European Union.

## Our global association

CEMR is also the European section of United Cities and Local Governments (UCLG), through which it represents European local and regional governments at international level.

## What we do

Our work is organised around two main pillars:

**Influencing European policy and legislation** in all areas having an impact on local and regional governments;

**Providing a forum for debate and cooperation** for elected representatives and experts from our 60 member associations.

## More info

-  [www.cemr.eu](http://www.cemr.eu)
-  [info@ccre-cemr.org](mailto:info@ccre-cemr.org)
-  [@ccreecemr](https://twitter.com/ccreecemr)
-  [pinterest.com/ccreecemr](https://pinterest.com/ccreecemr)

## CEMR in Europe

**60** national associations  
**150 000** local and regional governments  
**60** years of experience  
**41** countries



## CEMR in the world

**1** global association:  
United Cities and Local Governments (UCLG)  
[www.uclg.org](http://www.uclg.org)



The EU affects **60%** of the decisions taken at local level.

There are **40 000** twinning links in Europe.

Local governments are responsible for the management of **2.5 billion** tons of waste each year.

**1** of the UN's sustainable development goals is dedicated to local and regional action.



## Our action on the ground

CEMR's work focuses on five thematic areas, which affect all aspects of the lives of European citizens as well as the local and regional governments that represent them:

### Governance, democracy and citizenship

#### Local democracy

Local self-government represents one of the founding principles of our democracy. We call for its application as defined in the European Charter of local self-government.

#### European governance

We promote the involvement of local and regional governments in the drafting of European policy and legislation. We also support the implementation of a new model of governance in partnership.

#### Equality of women and men

We provide support to the 1 500 signatories of the European Charter for equality of women and men in local life, notably in the drawing up of action plans on the ground.  
[www.charter-equality.eu](http://www.charter-equality.eu)

#### Town twinning

We promote an active European citizenship through town twinning, a powerful tool to bring people together.  
[www.twinning.org](http://www.twinning.org)

### Local and regional public services management

#### Management of public services

The EU's competition, finance and administration rules have a major impact on the provision of services for citizens and enterprises. We uphold the right of local and regional governments to determine freely their way of managing public services.

#### Employment

As a recognised European social partner, we are involved in guiding European policy and legislation, such as the working time directive and the provisions on health and safety at work and working conditions.

### Economic, social and territorial cohesion

#### Regional development

The European structural and investment funds were devised to ensure economic, social and territorial cohesion. We monitor the application of these funds and contribute to the debate on the role of local and regional governments in this area.

#### Demographic change

Through our involvement in the AFE-INNOVNET project, we support the setting up of public policies adapted to citizens of all ages.  
[www.afeinnovnet.eu](http://www.afeinnovnet.eu)

#### PLATFORMA

Together with 23 other partners, we strengthen the voice of European local and regional governments active in development cooperation.  
[www.platforma-dev.eu](http://www.platforma-dev.eu)

### Environment, climate and energy

#### Climate and energy

We participate in the Covenant of mayors, an initiative to reduce CO<sub>2</sub> emissions, increase the use of renewable energy and energy efficiency by 20% by 2020.  
[www.eumayors.eu](http://www.eumayors.eu)

#### Air quality and waste

The legislation and policy objectives regarding air quality and waste are in large part determined at European level. By providing our on-the-ground knowledge and expertise, we contribute to the development of pragmatic solutions.

### International engagement and cooperation

#### Post-2015 Agenda, climate, UN-Habitat

Within UCLG, we coordinate the voice of local and regional governments in major international debates: definition of sustainable development goals for the post-2015 period, international climate negotiations, preparation for the 3<sup>rd</sup> UN-Habitat Conference.

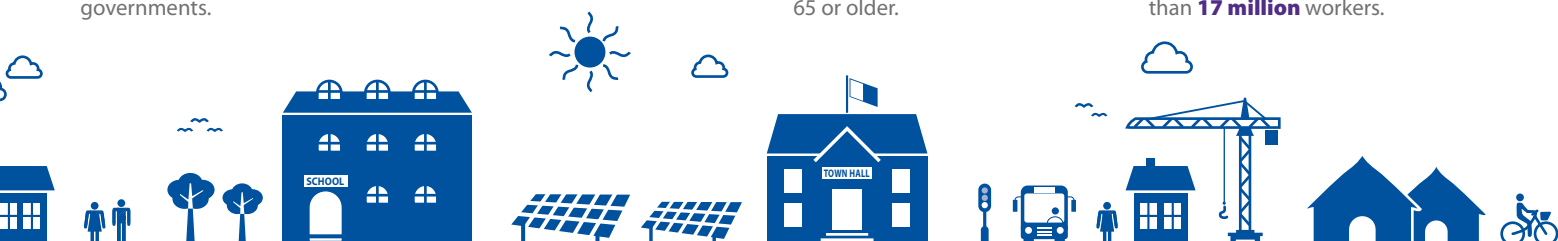


40% of European funds are invested in local and regional governments.

Europeans live:  
41% in urban areas  
35% in mixed areas  
23% in rural areas.

By 2025, more than 20% of Europeans will be 65 or older.

Local and regional public administrations employ more than 17 million workers.





## CEMR's member associations

### Albania

SHKSH  
SHBSH

### Austria

GEMEINDEBUND  
STAEDTEBUND

### Belgium

UVCB-VBSG  
AVCB-VSGB  
VVSG  
UVCW

### Bosnia and Herzegovina

SOGFBiH

### Bulgaria

NAMRB

### Croatia

HRVZZ

### Cyprus

UCM

### Czech Republic

SMO ČR

### Denmark

LGDK  
REGIONER  
KSF\*

### Estonia

ELL  
EMOVL

### Finland

KUNNAT

### Former Yugoslav

Republic of

Macedonia

ZELS

### France

AFCCRE

### Georgia

NALAG

### Germany

RGRE  
STAEDTETAG  
DStGB  
LANDKREISTAG

### Greece

KEDE

### Hungary

TÖOSZ

KÖOESZ

### Iceland

SAMBAND

### Irlande

LGMA\*

### Israel

ULAI

### Italy

AICCRE

### Kosovo

AKK\*

### Latvia

LPS

### Lithuania

LSA

### Luxembourg

SYVICOL

### Malta

LCA

### Moldova

CALM

### Montenegro

UOM

### Netherlands

VNG

IPO

### Norway

KS

### Poland

ZMP  
ZPP

### Portugal

ANMP

### Romania

ACOR

UNCJR

AMR

### Serbia

SKGO

### Slovakia

ZMOS

### Slovenia

SOS

ZMOS

### Spain

FEMP

### Sweden

SKL

### Switzerland

ASCCRE

### Turkey

TBB

### Ukraine

AUC

UAROR

### United Kingdom

LGA

WLGA

COSLA

NILGA



With the financial support  
of the Europe for Citizens  
programme

\* associate, observer and invited members